

Examination Templates

Last Modified on 10/03/2023 9:59 am AEDT

Examination Templates provide a quick method of entering patient examination details into an encounter's notes. There are templates for 14 different clinical examinations and you can also create your own.

Using an Examination template

The selections you make in the Examination Template are entered into the encounter notes when you select OK. This means a well-structured and comprehensive set of information is entered for the examination.

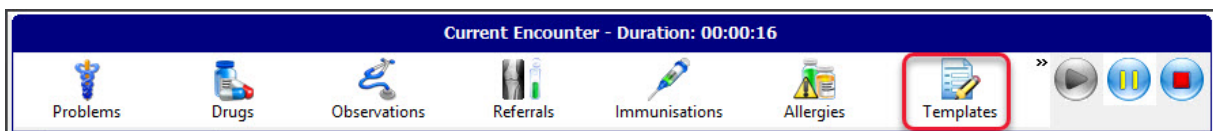
To use an examination template:

1. Start an encounter with the patient.

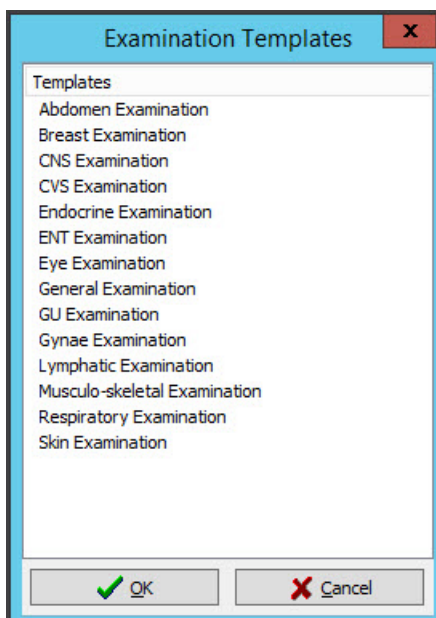
For a detailed explanation of how to do this, see the [Start an encounter article](#).

When the encounter starts, the **Current Encounter** pane will open and display the clinical modules.

2. Select **Templates** from the **Current Encounter** menu.



3. Select the template from the list.



4. Make your selections in the Examination Template to record the information.
5. Select **OK** to save and exit.

The information will be saved to the **Current Encounter** notes and added to the **History View** when the encounter is closed.

Below you can see an ENT Examination template's questions, and what the information looks like when you select OK to add it to the **Current Encounter** notes

The screenshot displays a medical software interface. At the top, a blue header reads "Current Encounter - Duration: 00:11:04". Below this is a toolbar with icons for Problems, Drugs, Observations, Referrals, Immunisations, Allergies, Consumable, Diagrams, and Templates. The main window shows an "Undefined Problem" section with an "RFE:" field and a "Management Plan" button. The central text area contains the following text: "ENT EXAMINATION - Red drum (Right Ear) Yes; Inflamed canal (Right Ear) No; Inflamed canal (Left Ear) Yes; Discharge (Right Ear) No; Discharge (Left Ear) No; Perforation (Right Ear) No; Perforation (Left Ear) No; Foreign body (Right Ear) No; Foreign body (Left Ear) No; Glue ear (Right Ear) No; Glue ear (Left Ear) No; Nose Redness (Right) No; Nose Redness (Left) No; Foreign body (Right) No; Nose Redness (Left) No; Ulcers/Other lesions No;". Overlaid on this is a dialog box titled "ENT Examination" with a close button (X). The dialog box has three sections: "Ears", "Nose", and "Throat". Each section contains radio buttons for "Yes" and "No" for various symptoms. The "Ears" section includes Red drum, Inflamed canal, Discharge, Perforation, Foreign body, and Glue ear, each with sub-options for Right and Left. The "Nose" section includes Redness, Discharge, Obstruction, and Foreign body, each with sub-options for Right and Left. The "Throat" section includes Redness, Enlarged tonsils, Pus, and Ulcers/Other lesions, each with a single Yes/No option. Below the "Throat" section is a text area labeled "Further description of mouth lesion:". At the bottom of the dialog box are "OK" and "Cancel" buttons. The background window also shows a "MHR" field and a "Appvl Nbr: 10108" field. The system clock at the bottom right indicates "10/03/2023 8:46 AM".

Examination Template editor

The template editor allows you to modify, copy or delete Examination Templates and create new templates.

To open the editor:

1. Open **Clinical**.
2. Select the **Tools** menu.
3. Select **Clinical Setup > Examination Template Editor**.

You can:

- Use **New** to create a new template
- Use **Edit** to modify the selected template.

- Use **Duplicate** to copy the selected template. The new template will be called "Copy of <original name>". This option is an easy way to make a new template as you can remove and rename existing questions and fields.

Template Name	Primary Form	Creation Date	Last Modified Date
Abdomen Examination	Yes	1/03/2006	
Breast Examination	Yes	1/03/2006	
CNS Examination	Yes	1/03/2006	
CVS Examination	Yes	1/03/2006	
Endocrine Examination	Yes	1/03/2006	
ENT Examination	Yes	1/03/2006	
Eye Examination	Yes	1/03/2006	
General Examination	Yes	1/03/2006	
GU Examination	Yes	1/03/2006	
Gynae Examination	Yes	1/03/2006	
John Examination	Yes	9/01/2023	9/03/2023
Lymphatic Examination	Yes	1/03/2006	
Musculo-skeletal Examination	Yes	1/03/2006	
Respiratory Examination	Yes	1/03/2006	
Skin Examination	Yes	1/03/2006	

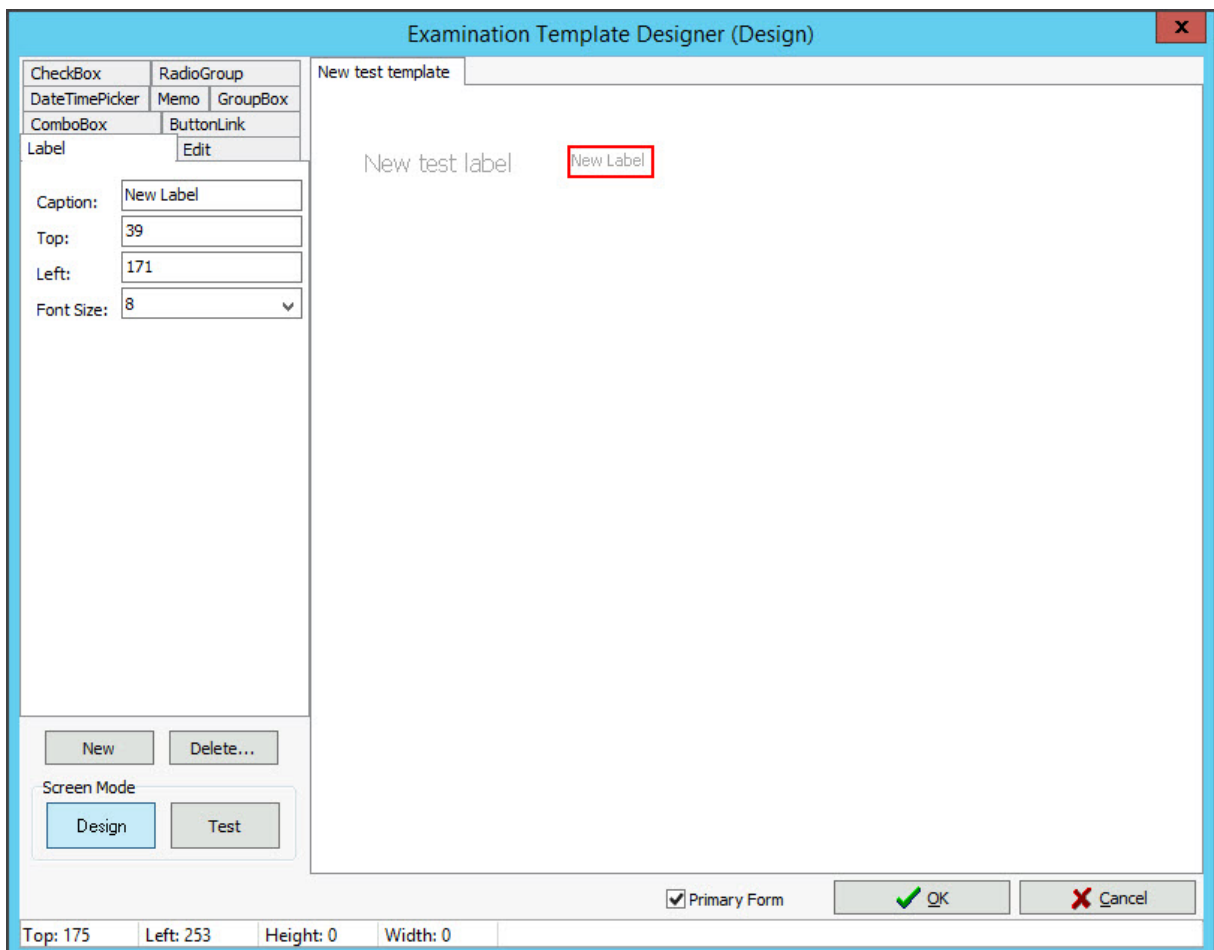
Making a new template

To create a new template:

1. Select the **New** button.
2. Type the name of the new template into the field provided.
3. If this form is to be displayed as a selectable template during a consultation, select the **Primary Form** check box.
4. If this template is to be called from another template, via a button link click and is not a primary form, unselect the **Primary Form** checkbox.

5. Select OK.

The Examination Template Designer will open.



Create, modify and delete Controls

To create a new control, select the tab of the desired control. Click the New button. The New button will grey out. Move the cursor over the Template Design Area. Position the mouse where you want the top, left coordinates of the control to appear and right-click and hold down the right mouse button. Now drag the mouse down and to the right. A red outline will be drawn. This shows the size of the control. Once the desired size is selected, release the right mouse button. You may now enter in other details for the control in the Control Tabs area. When completed, left-click anywhere within the Template Design Area except on the control you just created. The control creation will then be complete.

To modify a control, left-click on it once. The control will then have a red outline drawn around it to show that it has been selected. The Control Tabs will select the tab of the control selected and populate the values of that control into the fields. The control can be modified by changing the values or by clicking on the control again and moving it or resizing it with the mouse.

Select the control by left-clicking on it once. Once the red outline is drawn around it, click on the Delete button. A confirmation message will appear asking are you sure? Click "Yes" to delete the control.

Test and Design Mode

To test the screen, click on the Test button within the Screen Mode Group. The Test button will remain pressed and the Examination Template Designer window heading will display what mode the Designer is in.

Test that the various controls look right and that any Combo Boxes have the correct entered items.

To return to Design mode, click on the Design button. The Test button will come up and the Design button will stay pressed. The screen heading will also reflect what mode you are in.

Tab Order

Each control that has a Tab Order property should ideally have this field entered. They should be numbered from 0 (zero) and incrementing by units of 1 (one) for the next control. Normally the Top, Left control will be Tab Order 0 and the next one below it will be 1 and so forth. Only enter numeric values.

Saving Templates

Once all changes have been done, click on the OK button. This will save the Template. If you click Cancel, you will be prompted to save changes if changes have been made. It is recommended that on templates with many controls, to Close the template regularly so as to save all changes done and then reopen the template.

Controls Available

Label	The Label control is use to put static text on the screen.
Caption:	The actual text to be displayed.
Top:	The Top coordinate of this control.
Left:	The Left coordinate of this control.
Font Size:	The size of the font used with the Label control. Available font sizes are 10, 12, 14, 16, 18, 20, 22, 24, 26, 28 and 30 point.
Edit	The Edit allows for one line of alpha numeric data to be entered on the screen.
Top:	The Top coordinate of this control.
Left:	The Left coordinate of this control.
Width:	The Width of this control.

Text:	Default text to be displayed. Normally this will be left blank.
Tab Order:	The order the control will be selected when the Tab key is pressed. Also the order the contents of this control will be shown in the progress notes*
Show in Progress Notes	If this checkbox is selected, the entered contents of this control will be output to the progress notes. If the caption is also entered, the caption will be displayed first, followed by the contents of the control.

Memo	The Memo allows multiple lines for alpha numeric data to be entered on the screen.
Top:	The Top coordinate of this control.
Left:	The Height of this control.
Width:	The Width of this control.
Tab Order:	The order the control will be selected when the Tab key is pressed. Also the order the contents of this control will be shown in the progress notes*
Show in Progress Notes	If this checkbox is selected, the entered contents of this control will be output to the progress notes. If the caption is also entered, the caption will be displayed first, followed by the contents of the control.
Check Box	The Check Box control displays a label with a check box. If the check box is selected, it is True, otherwise it is False.
Caption:	The text to be displayed with this control.
Top:	The Top coordinate of this control.

Left:	The Left coordinate of this control.
Width	The Width of this control.
Checked	The default state of this control
Tab Order	The order the control will be selected when the Tab key is pressed. Also the order the contents of this control will be shown in the progress notes*.
Show in Progress Notes	If this checkbox is selected, the entered contents of this control will be output to the progress notes. If the caption is also entered, the caption will be displayed first, followed by the contents of the control.

Radio Group	The Radio Group control allows radio buttons to be available on the screen. Only one radio button is to be able to be selected at one time. On entering the screen, all buttons will be unselected. Once a button has been selected, one must remain
Top:	The Top coordinate of this control.
Left:	The Left coordinate of this control.
Height:	The Height of this control.
Width:	The Width of this control.
Columns:	The number of columns of buttons to be displayed. Available values are 1, 2, 3 and 4
Items:	Each line entered here, will be the name of the radio button. i.e. If you have three lines entered as Red, Blue and Green, you will therefore have three buttons labelled as Red, Blue and Green.
Tab Order	The order the control will be selected when the Tab key is pressed. Also the order the contents of this control will be shown in the progress notes*.

Show in Progress Notes	If this checkbox is selected, the entered contents of this control will be output to the progress notes. If the caption is also entered, the caption will be displayed first, followed by the contents of the control.
Date Time Picker	
Date Time Picker	The Date Time Picker allows a date to be entered on the screen.
Top:	The Top coordinate of this control.
Left:	The Height of this control.
Width:	The Width of this control.
Tab Order:	The order the control will be selected when the Tab key is pressed. Also the order the contents of this control will be shown in the progress notes*
Show in Progress Notes	If this checkbox is selected, the entered contents of this control will be output to the progress notes. If the caption is also entered, the caption will be displayed first, followed by the contents of the control.

Combo Box	
Combo Box	The Combo Box control allows a drop down list containing various pre-defined values to be selectable on screen. When this control is shown on screen, it will default to blank (nothing) selected.
Top:	The Top coordinate of this control.
Left:	The Height of this control.
Width:	The Width of this control.
Items:	Each line entered here will be a separate item in the drop down list.

Tab Order:	The order the control will be selected when the Tab key is pressed. Also the order the contents of this control will be shown in the progress notes*
Show in Progress Notes	If this checkbox is selected, the entered contents of this control will be output to the progress notes. If the caption is also entered, the caption will be displayed first, followed by the contents of the control.
Group Box	The Group Box is a box outline with a caption. It is used to logically group items together on t
Caption:	The Caption to be displayed with this control.
Top:	The Top coordinate of this control.
Left:	The Left coordinate of this control.
Height:	The Height of this control.
Width:	The Width of this control.

Button Link	The Button Link is used to place buttons on the screen. These buttons will launch other defined templates. The templates launched may be all types of templates including Primary templates.
Caption:	The Caption to be displayed with this control.
Top:	The Top coordinate of this control.
Left:	The Left coordinate of this control.
Width:	The Width of this control.

Tab Order:	The order the control will be selected when the Tab key is pressed. Also the order the contents of this control will be shown in the progress notes*.
Link:	This will list all available templates. The selected template will be the one launched when the button is pressed.