

# Office FRM Word templates

Last Modified on 24/07/2024 1:11 pm AEST

Zedmed Office uses templates for letters, labels and reports. A standard set of templates is included with Zedmed and you can also create your own using Microsoft Word or Zedmed's Internal RTF editor. The RTF editor is in Zedmed v36.3.3 or later and has its own [RTF templates](#) guide.

## Office Templates overview

When you create letters, print labels or run some reports, a template is used to apply settings, add content and import data. For most Zedmed users, Microsoft Word is used to create and update these templates. For Zedmed Cloud customers and those using remote (RDP) connections, Zedmed's Internal RTF editor is used.

### FRM templates ( Microsoft Word editor - covered in this guide)

Word templates have the prefix FRM and each template is linked to a data source Word document (prefixed DS) to support mail merge functionality. The FRM templates and DS documents are stored in the C:\Zedmed\Document and C:\Zedmed\Label.

To access FRM templates, go to the Zedmed Office menu and select **WP setup > FRM Documents**.

### RTF templates (Internal Zedmed editor - covered in its own guide for Zedmed Cloud users.)

In Zedmed v36.3.3 and later, users have the option to use Zedmed's internal Rich Text Format (.rtf) editor. RTF templates use a Data Tool to add data fields to the template to import a patient's address and clinical information directly from Zedmed.

To access FRM templates, go to the Zedmed Office menu and select **WP setup > Maintain Templates**.

### Template types

<b>Letters - FRM</b>	FRM Letter templates are used to write letters from the Patient Record's <b>Letters</b> menu.
<b>Letters - RTF</b>	There are no Letter templates for the RTF editor. Clinical's <b>Batch writer</b> is used to write letters for RTF users.
<b>Mail Merge</b>	Used in the <b>Appointment Report</b> Mail Merge tab, <b>Patients Report</b> Mail merge option, <b>Recalls Report</b> letter's
<b>Labels</b>	Used by the Patient Record Print > <b>Label</b> menu and Appointment Details <b>Print Label</b> button.
<b>Forms</b>	This single template is used to print out <b>patient details</b> from the patient record.

## Create custom FRM templates

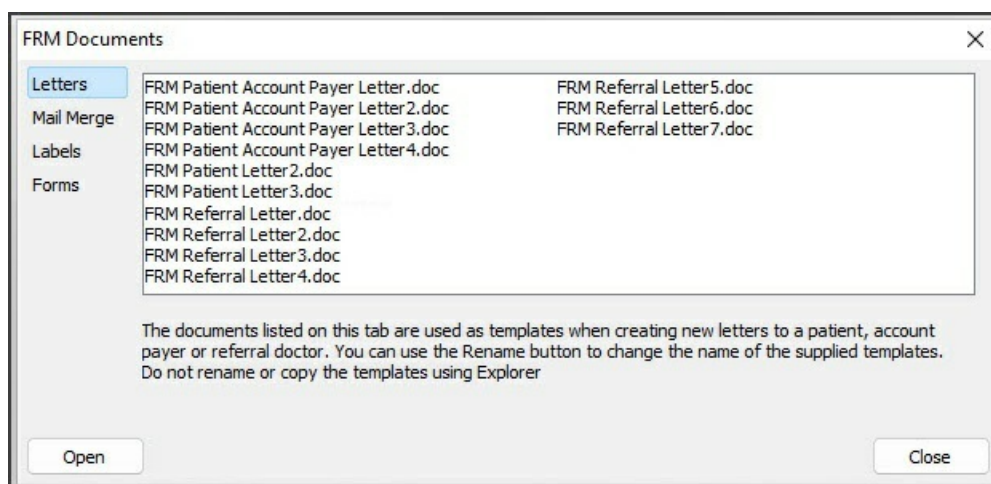
Zedmed includes a set of standard templates, and you can edit these templates to create custom versions. For letters, forms and the mail merge templates used by some reports, the process is explained below. For labels, the same process applies but the mail merge steps are different and explained in the next section.

**Note:** These steps change an existing template. They do not make a copy of a template or change its name. This is because Zedmed looks for specific templates by name to apply them. You can copy a Zedmed template in Windows, rename the original, and give the new template the name used by Zedmed, but this is often unnecessary and can overcomplicate the process.

To customise a template:

1. Go to Zedmed's **Management** tab.
2. Select **WP Setup > FRM Documents**.
3. Select the template tab required:
  - **Letters** - to be used with the Office letter writer.
  - **Mail Merge Documents** - to format Office reports.
  - **Labels** - to print patient and appointment labels.
  - **Forms** - to print out patient details.
4. Select an existing document to use as a template.
5. Select **Open**.

Microsoft Word will start.



6. Select **Yes** to the warning prompt to run the SQL command.
7. Select **Link data source** then the link dialog opens.

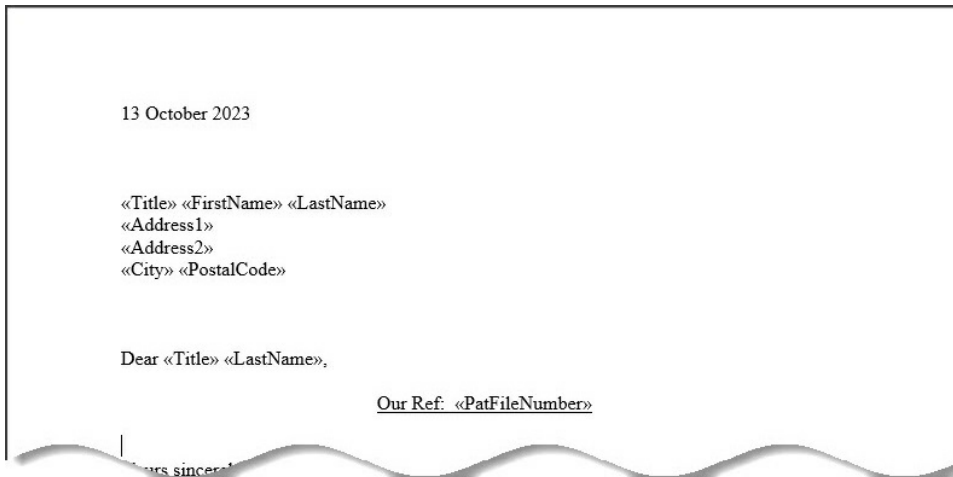
Browse to find and select the data source template for the FRM template you are copying. Data source templates are Word documents with the mail merge functions used by the FRM template.

For example, if you opened "FRM Referral Letter 2", you would locate and select "DS Referral Letter 2".

FRM templates and DS documents are both stored in the C:\Zedmed\Document and C:\Zedmed\Label

Name	Date modified	Type	Size
FRM Standard Patient Label	11/10/2023 2:37 PM	Microsoft Word 9...	33 KB
DS Appointment Label	18/04/2023 1:48 PM	Microsoft Word 9...	27 KB
DS Mailing Label	18/04/2023 1:48 PM	Microsoft Word 9...	24 KB
DS Patient Label	18/04/2023 1:48 PM	Microsoft Word 9...	33 KB
DS Referral Doctor Label	18/04/2023 1:48 PM	Microsoft Word 9...	24 KB
FRM Appointment Label	18/04/2023 1:48 PM	Microsoft Word 9...	30 KB

After you link the DS template, the FRM template will open in Microsoft Word.



8. Make the required changes to the template.

To make Mail Merge changes for labels, see [Label mail merge](#).

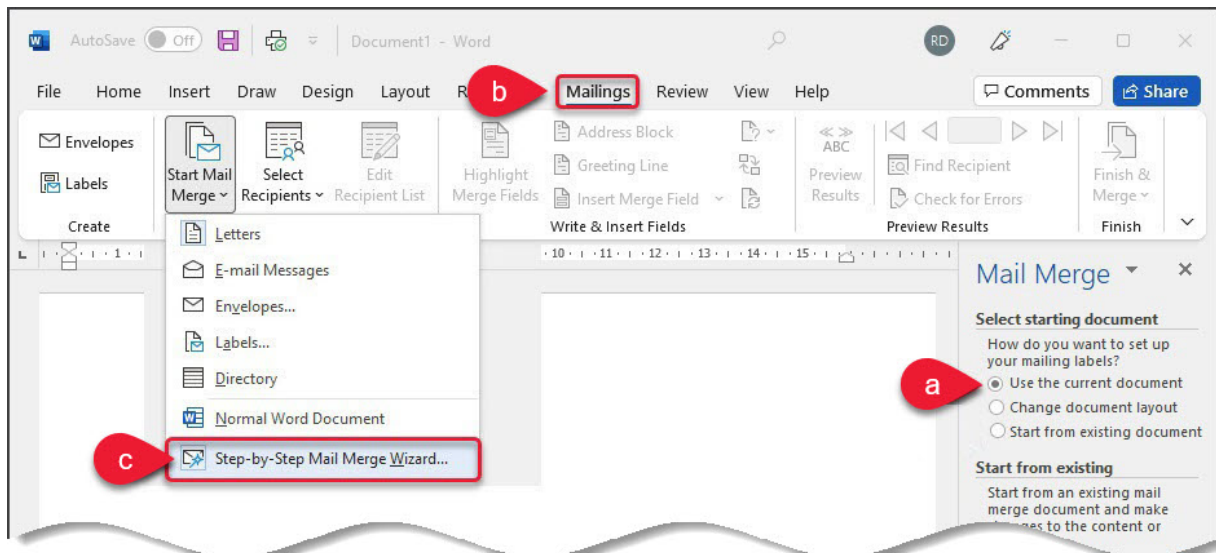
9. To make Mail Merge changes for letters and reports:

- Check that **Use the current document** is selected for Mail Merge.
- Select the **Mailings** ribbon.
- Select **Start Mail Merge > Step-by-Step Mail Merge Wizard**.
- Follow the wizard to make the changes required.

10. When you have finished, save the updated templates.

11. Test that the template reflects the intended changes.

For example, if you updated a template to add text to a letter, use the Letter writer to confirm the new text appears.



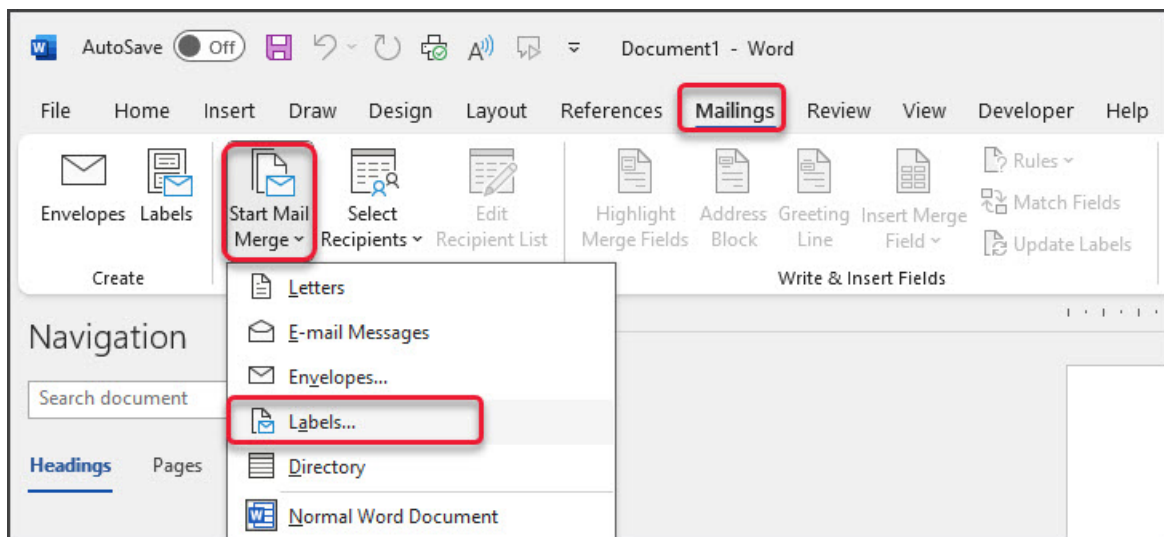
## Mail Merge for FRM label templates

When creating a custom label:

1. Follow the steps 1 to 6 in the [section above](#).

These steps will open the label template in Word.

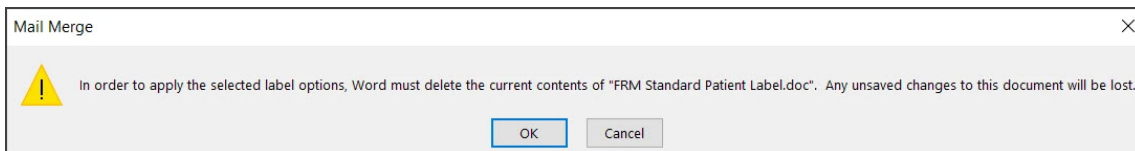
2. Press CTRL & A on your keyboard to highlight the template and copy it so you don't lose it when the label type is changed.
3. Select **Mailings > Start Mail Merge > Labels**.



4. If you use a label printer like a Dymo, tick the **Continuous Feed Printers** option.
5. If you print a sheet of labels through a standard printer, select **Page Printers** then select the appropriate tray.
6. To set the Label information, you will need the label's international code or product number.

This is normally found somewhere on the sheet or the label box.

7. Select **OK** once complete.
8. When you close out, you'll get the following popup:



9. If you have copied the template earlier, click **OK**.
10. If you didn't copy the template earlier, select **Cancel**, then copy everything & go back to the Label settings.

The original label template will get deleted out.

11. Right-click in the box & select **Text Direction**
12. Select the horizontal option then click **Ok**.
13. Right-click in the box again and from the Paste options, select **Keep Source Formatting**.
14. Make any adjustments required.

Merge fields can be accessed from the same spot as the other templates; Mailings > Insert Merge Field.

15. When complete, select **Close** and **Yes** to save.

**Note:** If the Label templates are renamed they will not print. Zedmed looks for specific template names like "FRM Standard Patient Label.doc" when you select a template from the print menu.